

STUDENT WIFI access Windows devices instructions.

In order to access the STUDENT WIFI system you will need to carry out the following two steps.

1 install the BGFL certificate.

2 connect to the School's STUDENT WIFI Wireless.

Step 1 will need to be completed using your 3/4G connection or at home when connected to your wireless.

Step 1 How to install the BGFL certificate

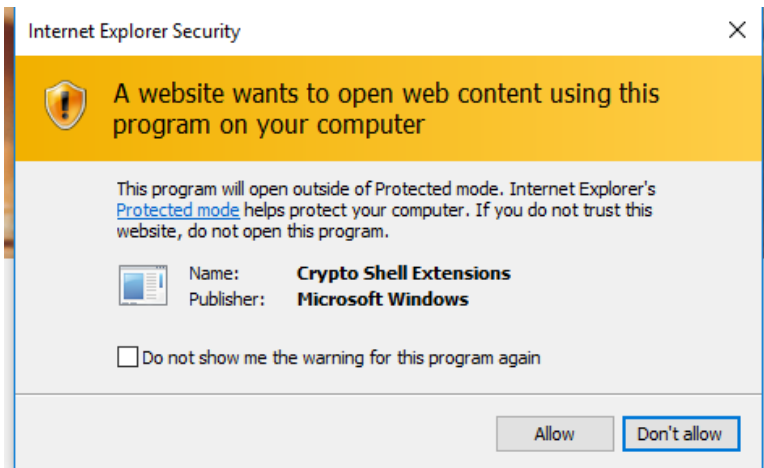
In order for BGFL to scan for inappropriate content in SSL encrypted traffic you will need to install certificate issued by BGFL before you can use the BVGS STUDENT WIFI system. The instructions below explain the process of how to install the certificate and connect the STUDENT WIFI network.

Open up the web browser and go to www.bvgs.co.uk/cert-link which will take you to this page where you need to click Certificate Download.

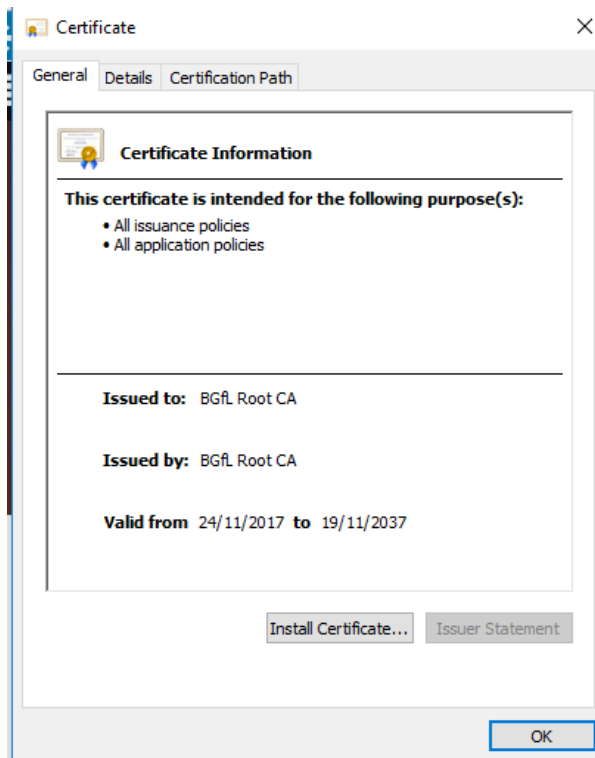
Click open.



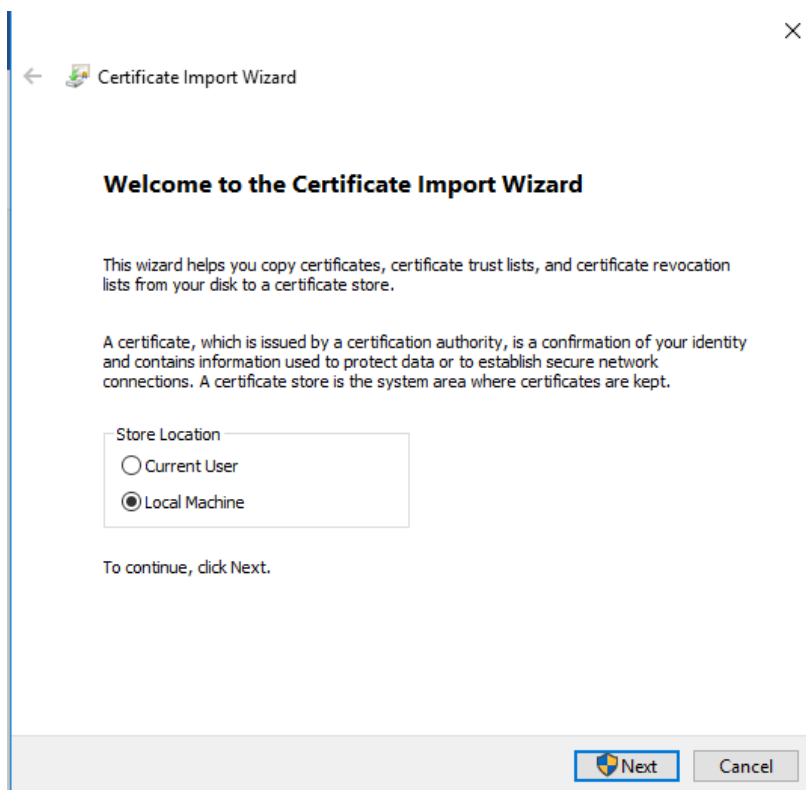
Click Allow.



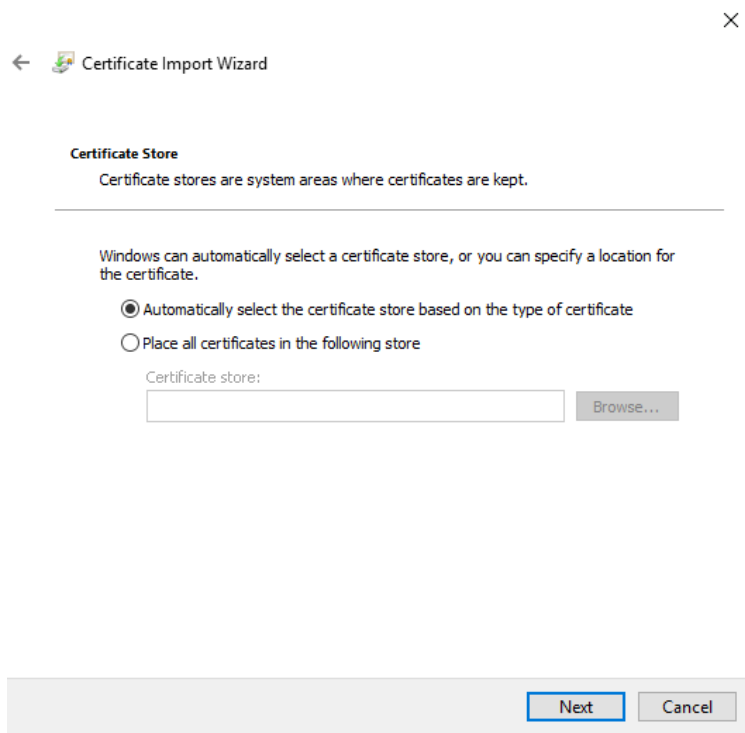
Click install Certificate.



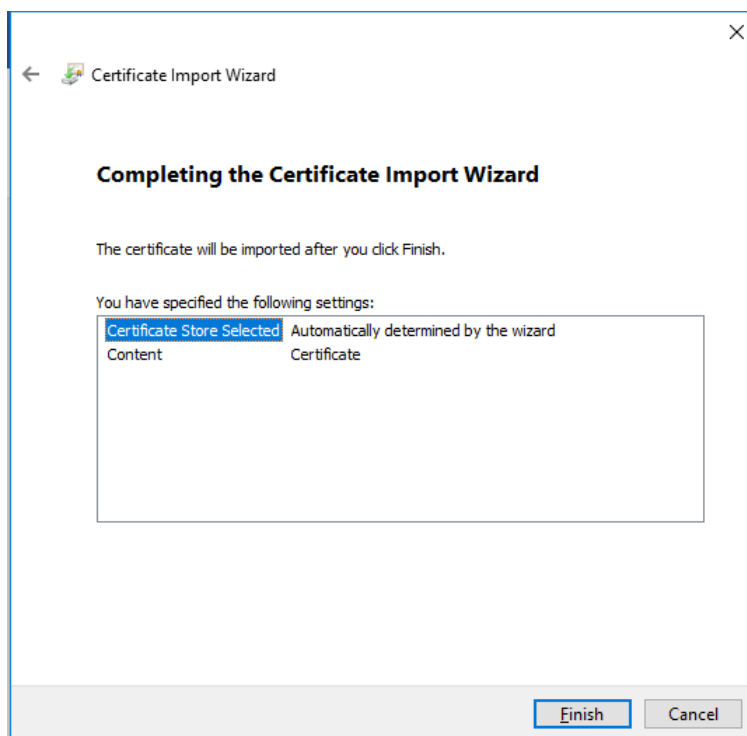
Select location machine and click next.



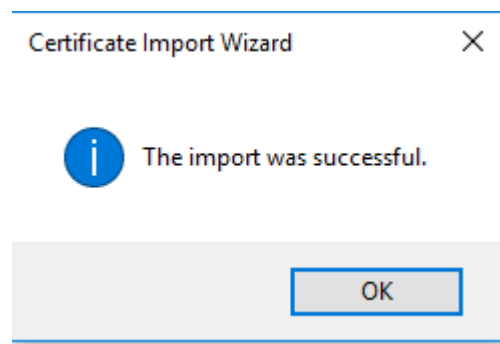
Select make sure Automatically select the certificate store based on the type of certificate. Click next.



Click finish.



Click ok.



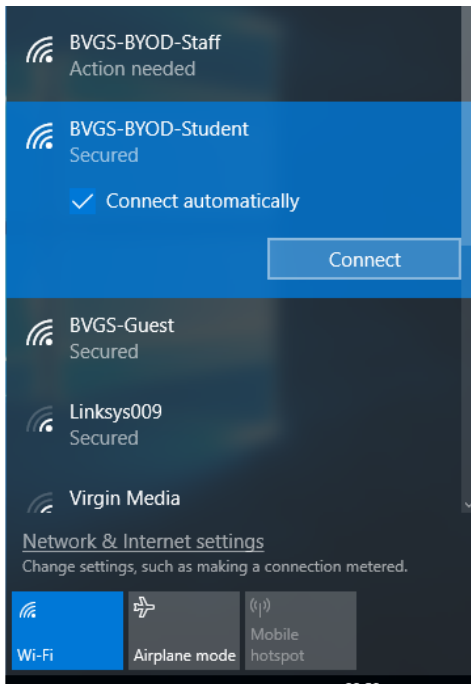
Step 2 Connecting to the the school STUDENT WIFI wireless Network.

Step two will need to be completed whist in school.

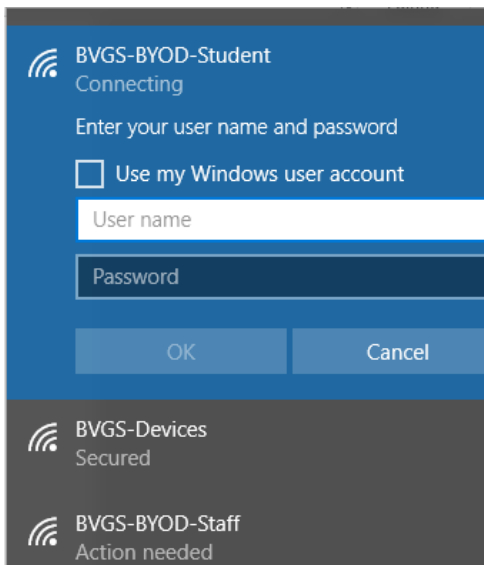
Firstly, turn on your wireless and click the relevant wireless SSID.

Please note

- **Staff** are only permitted to access *BVGS-BYOD-Staff*.
- **Students** are only permitted to access *BVGS-BYOD-Student*.



Enter your school username and password in the fields provided.





School Liability Statement

- All users bring their devices to use at Bishop Vesey's Grammar School at their own risk. All users are expected to act responsibly with regards to their own device, keeping it up to date with virus software and as secure as possible. It is their duty to be responsible for the upkeep and protection of their devices. Bishop Vesey's Grammar School is not responsible for:
 - personal devices that are broken while at school or during school-sponsored activities
 - personal devices that are lost or stolen at school or during school-sponsored activities
 - network costs incurred should the student not use the school-provided wireless-network
 - data loss from personal devices
- Any damage or disruption to the school network caused as a result of improper use of a users-owned device will be regarded as a very serious matter.
- Students must keep their devices in a secure place when not in use (eg a locked locker or kept on their person).

By clicking the button below, you agree to adhere to our full Acceptable Use Policy, which can be found on our website.

You will be redirected to the full policy after clicking the button below.

Continue to the Internet

Once the network shows up as connected open a web browser and try to access a website. This will then bring up the guidelines for acceptable STUDENT WIFI use which you need to read and accept.

You should now be connected to the STUDENT WIFI system.